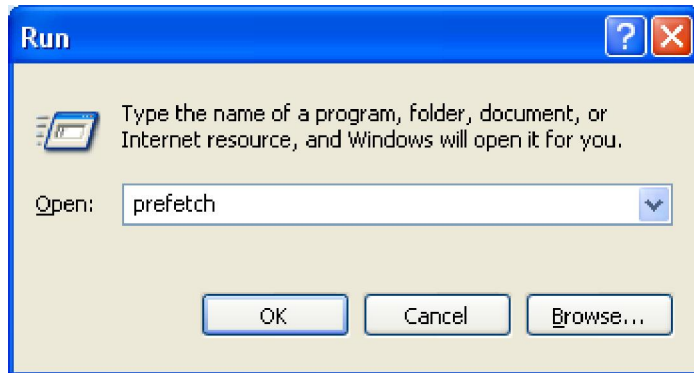


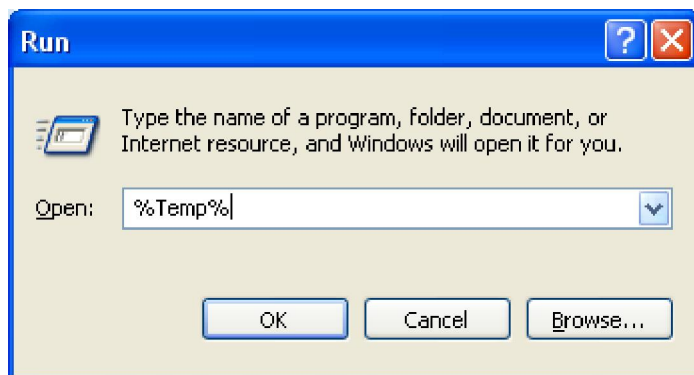
**Dear Sir,**

**Kindly perform all steps after connecting AC adapter.**

1. Start>>Run>>Prefetch and delete all the files under this folder.



2. Start>>Run>>%temp% and delete all the contents (some of the files cannot be deleted so leave those files)



3. Press win+r key>>Type msconfig>>Select Services Tab>>check the options Hide All Microsoft Services>>Select Start up tab>>uncheck unwanted options.

4.] Disable Remote Differential Compression.  
Start >> Control Panel >> Programs & Features >> Turn Windows Features On or Off

**Tasks**

- View installed updates
- Get new programs online at Windows Marketplace
- View purchased software (digital locker)
- Turn Windows features on or off
- Install a program from the network

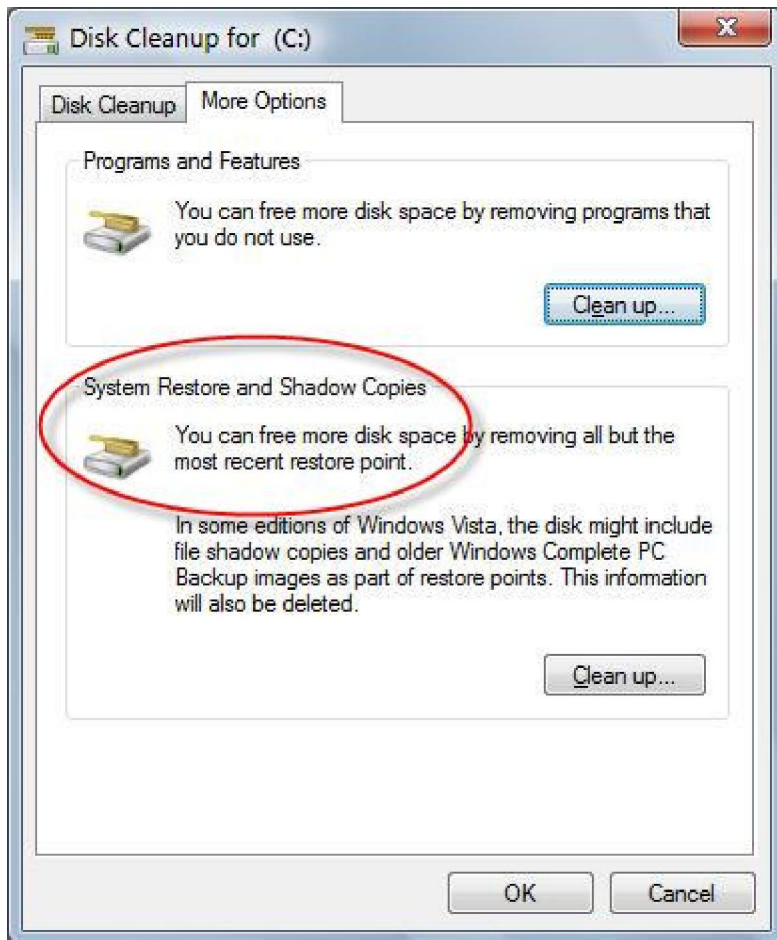
## Uninstall or change a program

To uninstall a program, select it from the list and then click "Uninstall", "Change", or "Repair".

Name	Publisher	Installed On	Size
Adobe Flash Player 9 ActiveX	Adobe Systems Incorporated	6/13/2007	
Adobe Reader 7.0.8	Adobe Systems Incorporated	12/22/2006	65.1 MB
Alps Pointing-device for VAIO		12/23/2006	2.74 MB
Audacity 1.2.6		7/28/2007	8.43 MB
Avanquest update	Avanquest Software	6/12/2007	2.01 MB
Bluetooth Stack for Windows by Toshiba		8/10/2007	54.3 MB
Click to DVD 2.0.05 Menu Data	Sony Corporation	6/12/2007	171 MB
Click to DVD 2.6.00	Sony Corporation	6/12/2007	171 MB

Remove check mark from Remote Differential Compression and click on ok.

The image shows two overlapping windows from Windows XP. The background window is the 'Windows Features' dialog box, titled 'Turn Windows features on or off'. It contains a list of features with checkboxes. 'Remote Differential Compression' is checked. A tooltip is visible over the 'Simple File Sharing' feature, which reads: 'Computes and transfers the differences between two objects using minimal bandwidth.' The foreground window is a 'Microsoft Windows' dialog box with the text: 'Please wait while the features are configured. This might take several minutes.' It includes a progress bar and a 'Cancel' button.



1. You will see a list of hard disk drives installed on your system, with checkboxes to the left. The check boxes with tick indicate that System Restore is on for that particular volume. So to turn off System Protection for a hard disk, **clear** (untick) the check box next to the disk.

System Restore helps you restore your computer's system files to an earlier point in time.

System Restore...

